



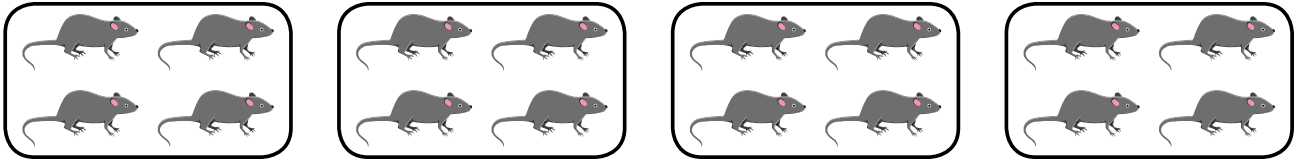
NAME \_\_\_\_\_

DATE \_\_\_\_\_

# FOUNDATION OF MULTIPLICATION/DIVISION

Use math drawings to represent equal groups and relate to repeated addition.

- 1) Write an addition sentence to match the picture. Then re-bundle to show a more efficient way to add.

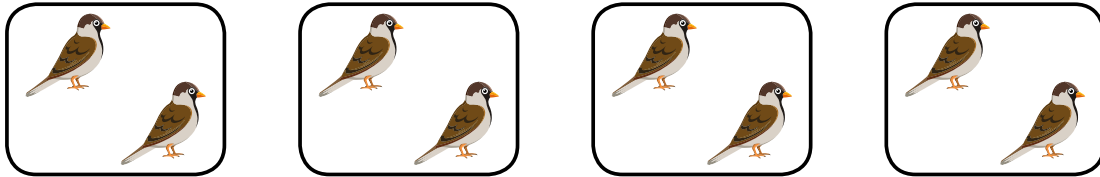


**Solution:**

$$\_ + \_ + \_ + \_ = \_.$$

$$\_ + \_ = \_. \quad = 4 \text{ groups of } \_ = 2 \text{ groups of } \_.$$

- 2) Write an addition sentence to match the picture. Then re-bundle to show a more efficient way to add.

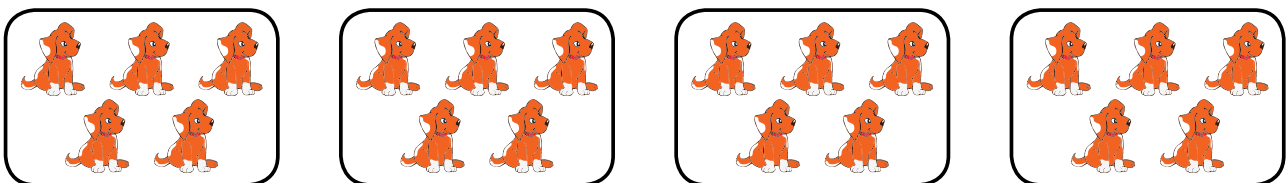


**Solution:**

$$\_ + \_ + \_ + \_ = \_.$$

$$= 4 \text{ groups of } \_ = 2 \text{ groups of } \_.$$

- 3) Write an addition sentence to match the picture. Then re-bundle to show a more efficient way to add.



**Solution:**

$$\_ + \_ + \_ + \_ = \_.$$

$$\_ + \_ = \_. \quad = 4 \text{ groups of } \_ = 2 \text{ groups of } \_.$$